

# Reverse osmosis with water softener

## Chemical industry

### APPLICATION:

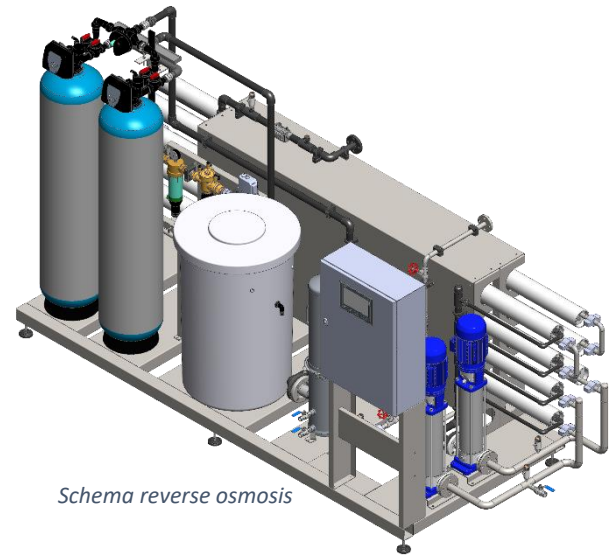
- Production of care and cleaning agents in the automobile industry
- Processing of town water for production

### PROCEDURE:

- Prefilter for elimination particles < 5 µm
- Double softening system to 0°dH
- Permeate-stepped reverse osmosis for desalination of softened drinking water, filter area 150 m<sup>2</sup>
- Fully automatic control

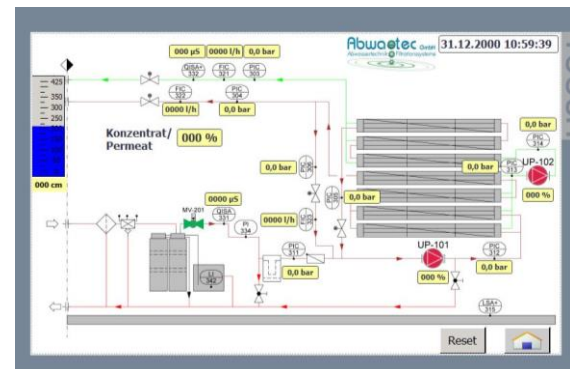
**REALISATION:** 2022

**LOCATION:** Germany



Schema reverse osmosis

Parameter/Technical data	
Temperature	< 35 °C
pH	6 - 9
Permeate performance	2000 l/h
Conductivity inlet	617 µS/cm
conductivity permeate	< 10 µS/cm
Working pressure	Max 14 bar
Installed power	9 kW



Touch panel



Plant overview

A202402