

Reverse osmosis with water softener

Energy- and Storage technology

APPLICATION:

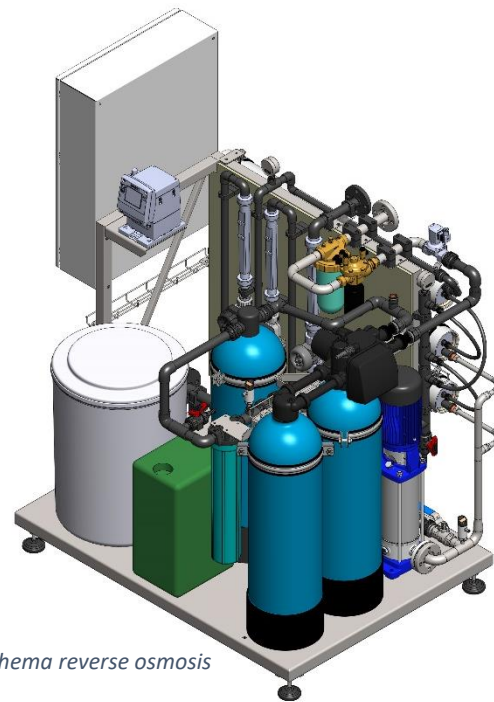
- Production of graphite foils for storage technology
- Preparation of city water for production

PROCEDURE:

- Prefilter for elimination particle size > 5 µm
- Double softening system to 0 °dH
- Reverse osmosis for desalination of softened water, filter area 24 m²
- Dosing station NaOH for the binding of CO₂ to sodium carbonate and thus the retention by the membrane
- Fully automatic control

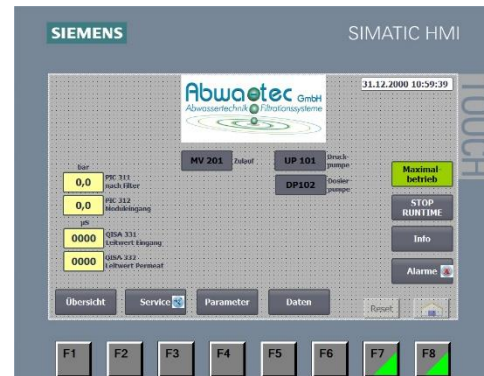
REALISATION: 2020

LOCATION: Germany



Schema reverse osmosis

| Parameter/Technical Data | |
|--------------------------|------------|
| Temperature | 20 °C |
| pH | 6 - 9 |
| Performance permeat | 500 l/h |
| Conductivity permeat | < 10 µS/cm |
| Working pressure | Max 12 bar |
| Installed power | 4,5 kW |



Control panel



Plant overview



Detail view

A202401