

APPLICATION:

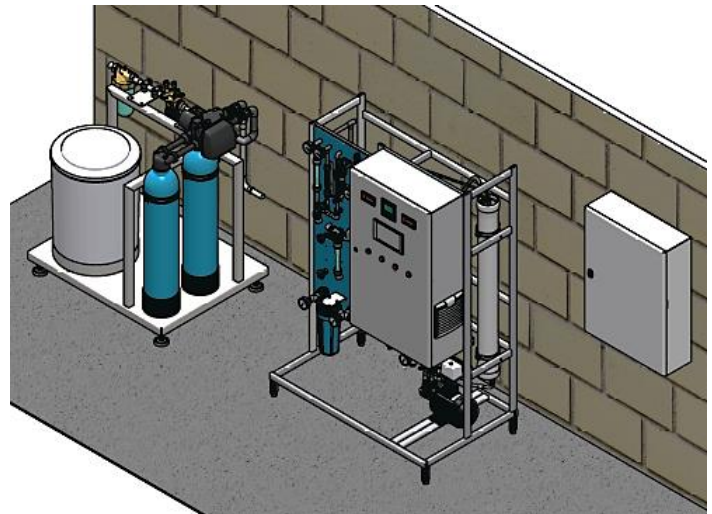
- Production of natural cosmetic
- Preparation of ultrapure water – full desalination of softened drinking water by reverse osmosis and electrodeionisation

PROCEDURE:

- Softfilter 5 µm filter cartridge, backwashable
- Double softening system to 0°dH
- Reverse osmosis
- Elektrodeionisation to continuous diluat quality with conductivity < 1 µS/cm
- UV- treatment for desinfection
- Fully automatic control

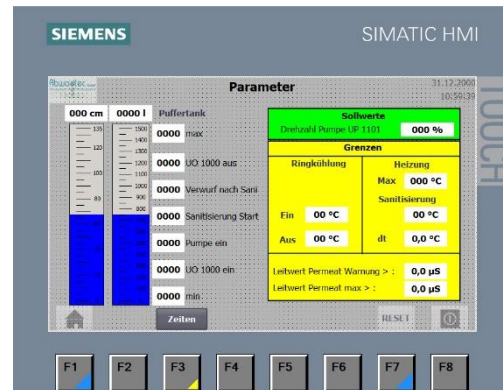
REALISATION: 2020

LOCATION: Germany



Schema reverse osmosis with EDI

Parameter/Technical data	
Temperature	5 – 35 °C
pH	5 – 9,5
Permeat performance RO	200 l/h
Conductivity diluat EDI	< 1 µS/cm
Working pressure	max 12 bar
Installed power	1,5 kW



Control panel



Plant overview

A203701